

GlobalSign SSL Managed Service™

Manage Multiple Enterprise Level SSL Certificates

Manage the complete lifecycle of enterprise level SSL Certificates through GlobalSign's SSL Managed Service, including issuing, reissuing, renewing, revoking and billing management for multiple SSL Certificates across numerous departments and office locations.

SSL Managed Service provides the ability to quickly; simply and conveniently manage GlobalSign's leading SSL Certificates through a web based management interface designed around enterprise specific security requirements, and will help organisations significantly reduce the budget, time and management costs of using SSL.

The Importance of Security within Today's Economy

As e-commerce transactions increase and organisations bring more services online, security plays an increasingly critical role within organisations of all sizes. SSL, the transaction layer security technology, is now integral to every company's security policy - online transactions, data transfer, network traffic, and digital communications require a secure platform from which to be delivered / processed. From the consumer perspective, digital-age threats such as phishing attacks and identity theft continue to increase and online customers now expect an ever higher level of security as standard. Undeniably, SSL Certificates are now an essential operational requirement for all organisations that have an online presence.

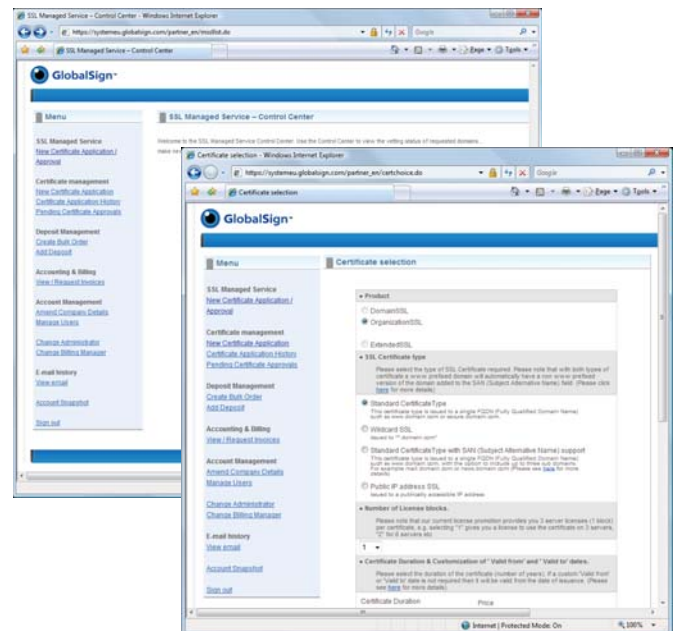
Minimise PKI Costs with GlobalSign's PKI Service

This growing requirement for increased security can impact an organisation's budget, time and management resources. For example, implementing a successful Public Key Infrastructure (PKI) solution requires new investment in software, hardware and will invariably require sufficient IT and administrative capacity to implement the solution effectively. For these reasons, most organisations opt for an outsourced, fully managed Certificate Services provider where costs can be significantly reduced, but control is kept firmly with the organisation.

Through global investment in technology, staff and understanding of compliancy and regulation, GlobalSign has built an incredibly robust and comprehensive PKI service designed for effective management of SSL Certificates. GlobalSign's SSL Managed Service enables control of SSL Certificate issuance and management, without the need to invest in expensive infrastructure and expert staff. It is highly cost-effective, scalable, reliable, immediately deployable, and being a fully managed web based service, incredibly fast and simple to use.

Cost Associated with SSL Certificate Management

Managing multiple SSL Certificates can be costly and time-consuming. For traditionally vetted, high assurance SSL Certificates, organisations need to go through extensive registration and verification processes with the SSL Provider for each and every SSL Certificate purchased. Administrators must also keep track of their Certificate's differing expiration dates. On a yearly basis, administrators can spend many costly man-days just buying and renewing SSL Certificates.



Time and costs associated with managing multiple certs

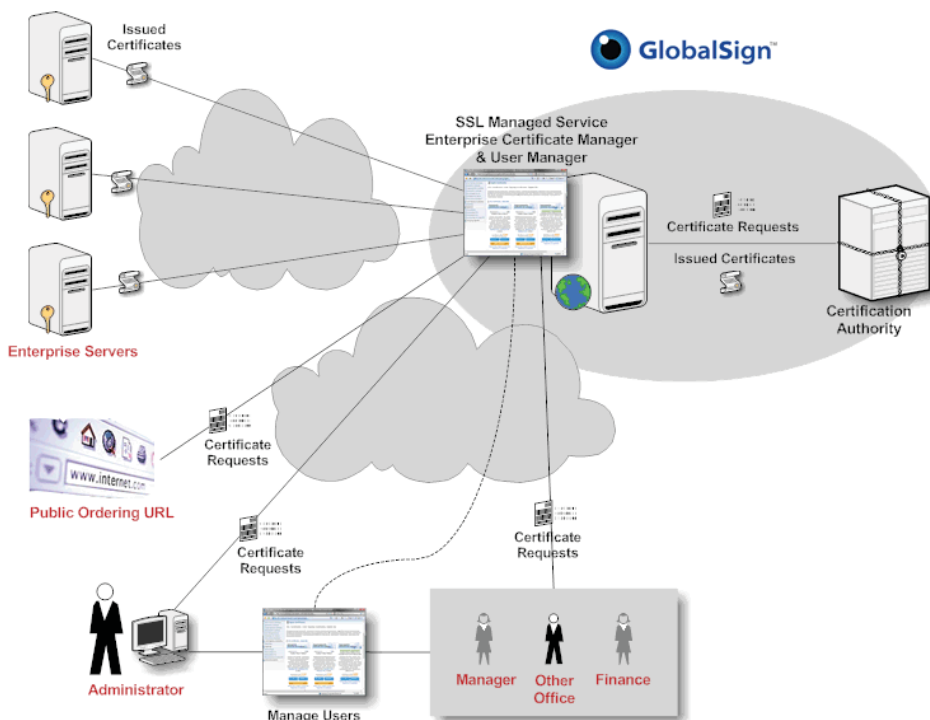
- No automatic "snapshot" or view exists that details the number of Certificates
- Certificates expire at different times, potentially exposing customers to dangerous "Certificate has expired" messages
- Corporate documents must be submitted over and over again
- Even though numerous SSL Certificates are purchased, no automatic discounts are received
- SSL budgetary requirements become difficult to determine when each department purchases ad hoc

Manage multiple certs easily and lower costs

- Option to use co-termination – all Certificates expire during selected period
- One time vetting only - once vetted administrators can issue SSL Certificates on demand
- Lower costs - instant discounts on standard SSL Certificates and also Wildcard SSL plus other SSL Certificate options - Certificates issued to IP addresses and internal hostnames for Intranet usage
- Ability to specify customised start and end dates for all SSL Certificates issued – helping with co-termination and general co-ordination of start/end dates

Why Choose GlobalSign's Fully Managed SSL Service?

SSL Managed Service from GlobalSign provides the ability to conveniently and quickly purchase GlobalSign's leading SSL Certificates through a web based management interface. It alleviates costs, simplifies management, and optimises efficiency of SSL Certificate delivery. This scalable, cost effective solution can be used by the most distributed of organisations. One time vetting means once vetted, users simply log into the web based account (Software as a Service [SaaS]) model (or XML API) and issue, reissue, renew or revoke SSL Certificates on demand. Granular user privileges allow administrators to create roles for users to apply, approve or report on billing and SSL Certificate activity within the account. Plus, immediate discounts mean savings over purchasing SSL Certificates from multiple suppliers or via premium priced retail sites.



Premier Support Levels

To meet stringent enterprise level SLAs GlobalSign can offer Premier Support, a service that provides around the clock access to a live dedicated support technician 24 hours a day, 7 days a week, 365 days a year with maximum response times of 20 minutes. A support technician is ready to assist with any aspect of account management or Certificate installation issues.

The Benefits of an Industry Leading WebTrust Certified Certification Authority without the need to manage your own software, hardware and expert CA personnel. GlobalSign maintains an industry leading Certification Authority and associated Root Certificates. All the organisation has to do is decide when to issue SSL Certificates.

<http://eu.globalsign.com>

Managed SSL Service Benefits:

No Infrastructure or Personnel Overheads – GlobalSign runs the WebTrust certified Certification Authority (CA) and web based management portal – the Enterprise Certificate Manager – peerless in its ease of use and functionality. Administrators simply log in and manage SSL Certificates online.

Complete Certificate Lifecycle Management – the organisation controls the application issuance, reissuance, renewal and revocation of Certificates across many departments using the Enterprise Certificate Manager, plus has ability to customise all Certificates to start and expire within the same time period.

Pre-vetting of Domains allows Instant Issuance – the organisation no longer has to provide CA with company details for every Certificate issued. By using the Enterprise Certificate Manager, issuances can occur within minutes.

Certificate Discounts – GlobalSign charge no service fees and enable organisations to save considerable budget by purchasing in bulk or Pay As You Go, compared to buying SSL Certificates separately, or from a GlobalSign competitor. Flexible options allow bulk (in packs of 10, 50 or 100, or fully customized quantities) and multi-year purchases.

Advanced Delegated Administration and Approval Based Model – administrators have the ability to create additional users within defined roles with appropriate privileges (e.g. IT Manager for Certificate management and Finance Manager for billing). Administrators and users with approval privileges can decide whether applications should be issued (with email alerts sent to approvers).

Public Ordering URL - when activated, the Public Ordering URL allows administrators to share, or post, an application link (e.g. on Intranets). Anybody can place an order for the Certificate via the link and the administrator is alerted to approve new applications.

Full Billing Management – the organisation can view and download invoices and automatically create new downloadable "quotes" for internal authorisation.

Comprehensive Reporting and Auditing Functions – detailed reports on spend, Certificates issued, upcoming renewals can be created.

XML Based API - allows full integration with the organisation's purchasing systems.

Dedicated Account Manager – provides localised comprehensive support via phone, email and web. The Account Manager can be contacted to discuss account or Certificate lifecycle management issues.

Premier Support Options – if added, organisations have access to a live dedicated support technician 24 hours a day, 7 days a week, 365 days a year, with a maximum response time of 20 minutes. GlobalSign prides itself on providing the industry's highest level of customer service at all times.

SSL Certificate Benefits:

Highly Trusted SSL - supported by all popular browsers, mobile devices and applications (approx 99% ubiquity). Certificates are issued from GlobalSign's trusted root. A full list of compatible servers, browsers and mobile devices can be downloaded from the GlobalSign website.

(http://www.globalsign.com/resources/ssl_root_compatibility.pdf).

Free SGC Security - includes strong 128 bit step-up encryption to force weaker 40 bit browsers to step-up to stronger 128bit browsers or 256 bit enabling technology, improving overall SSL security. SGC from other SSL Providers features at a premium price, but is included free of charge with every GlobalSign SSL Certificate.

Free SSL Installation Healthcheck - GlobalSign ensures SSL Certificates are installed and working correctly by checking the server ability, SSL Certificate installation, common error checking and trust enhancing Secure Site Seal installation.

Free Server Licenses - 3 server licenses issued with each SSL Certificate to enable organisations to easily secure primary server, secondary or backup server and load balancer without facing additional costs. Other SSL Providers typically issue one license and charge premium prices for additional licenses.

Custom Options - add Wildcard SSL, Intranet names / hostnames, IP addresses as premium options. Wildcard SSL provides the ability to secure multiple websites on the same domain name by enabling a variable (rather than fixed) sub domain to be used; saving time,

administration and money. If operating an Intranet, Subject Alternative Names (SAN's) can be specified within the Certificate to secure Intranet hostnames. Some organisations may require SSL Certificates to be issued to an IP address - this can be achieved with GlobalSign.

Secure Both www and non-www Sites with Single Certificate for No Additional Cost - SSL Certificates are usually issued to a specific Fully Qualified Domain Name (FQDN). To secure both www.domain.com and just domain.com for example, two separate Certificates would usually be required. But not with GlobalSign SSL - the only professional level SSL Certificate to include both forms of the domain name within the Certificate but without additional charges, new IP purchase or server configuration.

Clickable Site Seal - enables organisations to show a secure site and enhance trust and credibility of online presence. Easy to install on any web page, the Site Seal can be clicked to deliver a full website profile. The GlobalSign Site Seal will increase visitor trust, convert general visitors into paying customers and reduce the amount of abandoned shopping carts and uncompleted web forms.

\$250k Warranty - the organisation is protected by GlobalSign's warranty underwritten by insurance.

About GlobalSign

Established in 1996, GlobalSign has been securing identities, websites and transactions as a worldwide digital certificate provider for over 10 years. Now part of the GMO Internet Inc. group (listed on the Tokyo Stock Exchange TSE: 9449), GlobalSign comprises of considerable expertise and know-how in the online security industry.

As a WebTrust accredited Certificate Authority, GlobalSign offers publicly trusted SSL Certificates, Code Signing Certificates, and Digital IDs, issuing over 1.4 million digital Certificates to individuals, websites and machines. In total over 20 million digital Certificates rely on the security the GlobalSign root, technology and infrastructure provide.

GlobalSign is also a member of the CA/B Forum and Anti-Phishing Working Group - a show of its dedication to improving the security for both consumers and businesses.

GlobalSign prides itself on high level customer service, with localised sales and technical support expertise available throughout US, Europe (UK and Belgium) and Asia (Japan and China), available in a number of languages via phone, email and web. As a highly reputable and trusted digital certificate provider, GlobalSign provides Certificates for global enterprises such as BMW, ING Bank, Vodafone, Fortis and Gocompare.com.

LEARN MORE

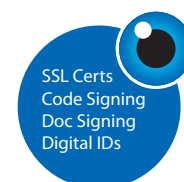
Contact GlobalSign today to discuss how to manage SSL Certificates more efficiently using GlobalSign's SSL Managed Service.

Email: sales@globalsign.com

GlobalSign NV

UbiCenter, Philipssite 5
3001 Leuven, Belgium
TEL: +32 16 89 19 00 FAX: +32 16 89 19 09

<http://eu.globalsign.com>



A Leader in Online Security
& Authentication Solutions
for over 10 years